



Set Weight & Dimensions

Recommended Minimum Space *Dimensions are based on pictured configurations	53" W X 35" H X 97" D
---	-----------------------

Individual Item Dimensions

Latitude Dining Side Chair	21" W x 34.44" H x 24.25" D
Latitude Dining Arm Chair	26.94" W x 34.44" H x 25.56" D
84" Parsons Dining Table	84" W x 30.25" H x 40" D

PRODUCT DESCRIPTION

Clean, horizontal lines and sharp angles speak to bold shapes, while the spacious frames create a balanced yet striking aesthetic that makes your outdoor space feel open and inviting. The Latitude Collection intersects form and function in every carefully-crafted detail. Shown here with 2 Dining Arm Chairs, 4 Dining Side Chairs, and the 84" Parsons Dining Table.

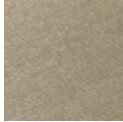
DETAILS

- PW Designer Series Collection
- Includes (2) Latitude Dining Arm Chairs, (4) Latitude Dining Side Chairs, and (1) 84" Parsons Dining Table
- Chairs feature curved backrests
- Table outfitted with 1.625" center hole for standard umbrella (sold separately); hole cover included
- Built to withstand a range of climates including hot sun, snowy winters, and strong coastal winds
- Constructed of genuine POLYWOOD® lumber that's infinitely recyclable and sustainably made from recycled and reusable plastic
- Durable, all-weather lumber not prone to splinter, crack, chip, peel, or rot
- 20-year limited residential warranty; 3-year limited commercial warranty
- Cleans easily with soap, water, and a soft-bristle brush
- UV protectant and color continuously throughout the HDPE material; requires no painting or waterproofing
- Marine-grade quality hardware
- Made in the USA

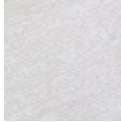
POLYWOOD COLOR OPTIONS



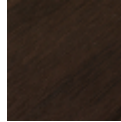
VCF



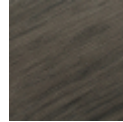
VSH



VWH



NKA



NDW