



Set Weight & Dimensions

| | |
|---|--------------------------------|
| Overall Set Weight | 656.5 lbs |
| Recommended Minimum Space *Dimensions are based on pictured configurations | 172" W X 35" H X 94" D |
| Individual Item Dimensions | |
| Latitude Dining Arm Chair | 26.94" W x 34.44" H x 25.56" D |
| 120" A-Frame Dining Table | 120" W x 30" H x 42" D |

PRODUCT DESCRIPTION

For those who appreciate minimalist design and bold expression. An ultra-modern and striking collection, vividly sculptural with clean, continuous lines and a low profile, featuring platform bases and defined angles that boast a flawless finish. Shown here with the 120" A-Frame Dining Table and 10 Arm Chairs.

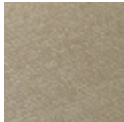
DETAILS

- Set includes (10) Latitude Dining Arm Chairs and (1) 120" A-Frame Dining Table
- Table outfitted with 1.625" center hole for standard umbrella (sold separately); hole cover included
- Built to withstand a range of climates including hot sun, snowy winters, and strong coastal winds
- Constructed of genuine POLYWOOD® lumber that's infinitely recyclable and sustainably made from recycled and reusable plastic
- Durable, all-weather lumber not prone to splinter, crack, chip, peel, or rot
- 20-year limited residential warranty; 3-year limited commercial warranty
- Cleans easily with soap, water, and a soft bristle brush
- UV protectant and color continuously throughout the HDPE material; requires no painting or waterproofing
- Marine-grade quality hardware
- Made in the USA

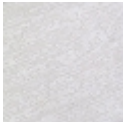
POLYWOOD COLOR OPTIONS



VCF



VSH



VWH